

**TRAY FOR  
PAINTING**



## TRAY FOR PAINTING



*TRAY for the use in painting lines, that guarantee a safe and easy transport between the injection molding, the painting, the assembly and your customers.*

The constantly increasing quality requirements are a challenge for every production process.

To avoid fingerprints, scratches, or staining on components with sensitive surfaces.

**Reduced handling**

**Minimized scrap rate**

**Optimized quality**

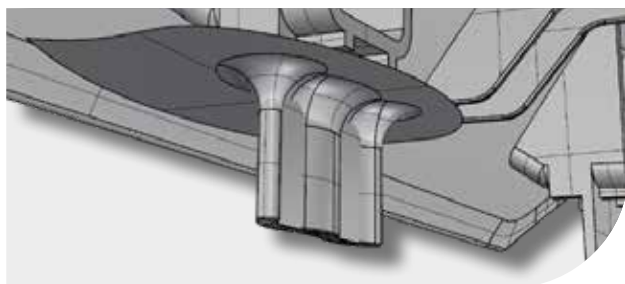
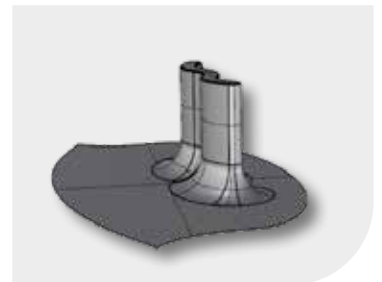
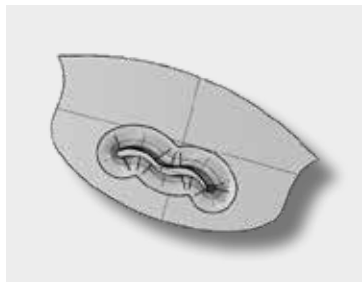
**Solution: TRAY for painting**

The TRAY are loaded with the raw parts directly after the injection molding cycle, where they can be cooled and stored temporarily.

Then the TRAY with the molded parts go through the painting and drying process.

To withstand the processing temperatures, the TRAY are made of ABS, which makes them resistant up to 85 °C.

Even during quality control, the parts can remain on the TRAY and then go into the assembly or directly to the customer. The TRAY for painting can be used multiple times and are a cost-effective and light-weight alternative to aluminum or steel frames.



*The design of the tools already contains the clamp without requiring further worksteps. Thus, the clamping tolerance, the defined distance between component and tray and the increased stability is ensured.*